



DLTCAD 14 SOFTWARE TOOLS

EDITION OF TOPOGRAPHIC DATA.

The topographic data for beginning the design of an overhead transmission line is the major data entered as input for starting the development of a project. Once these data is located in the computer, it can also edited by using the software.

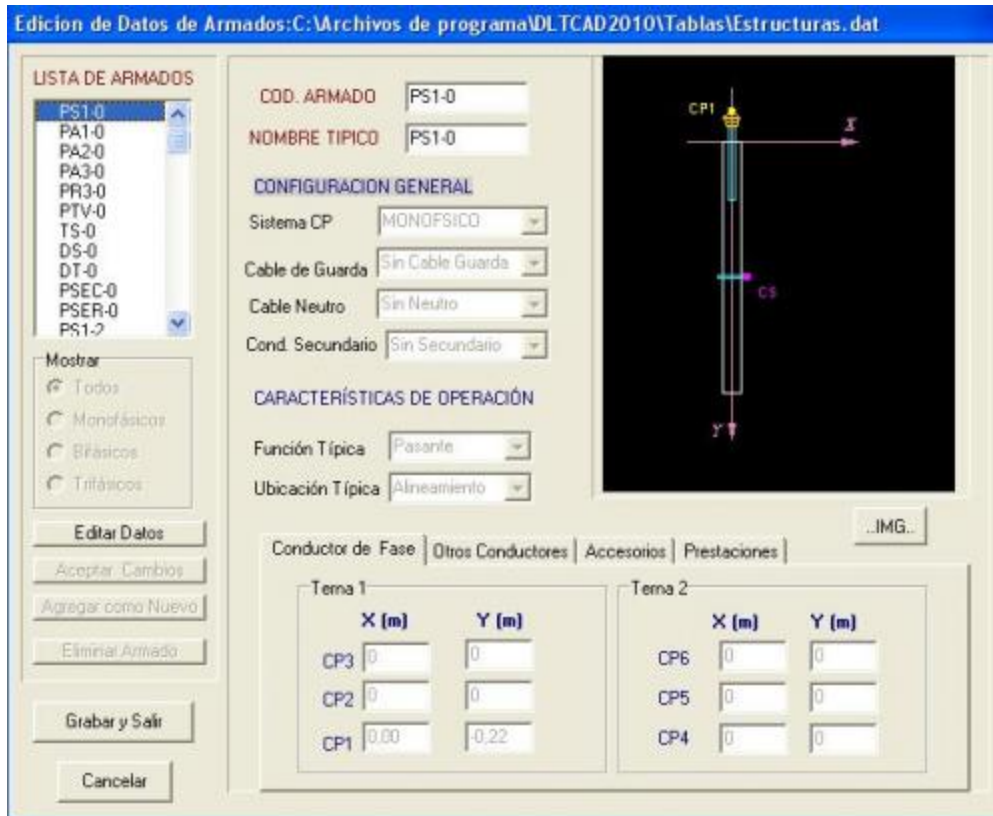
The screenshot shows a software window titled "Puntos de Perfil Topografico". It contains a table with 8 columns: Punto, Progresiva (m), Cota (m), Atributo, Angulo(°g), Etiqueta, Tip. Terreno, and Comentario. The table lists 13 data points. Below the table are several buttons: "Cancelar", "Aceptar", "Editar Contrapendientes", "Personalizar Atributos", and "Personalizar T. Terreno". At the bottom, there are two checkboxes: "Colocar Comentario como estructura" and "Invertir todos los Angulos".

Punto	Progresiva (m)	Cota (m)	Atributo	Angulo(°g)	Etiqueta	Tip. Terreno	Comentario
1	0.0000	2895.1540	0	0°	PuntoSalida	0	
2	10.2741	2895.2100	0	0°	R	0	
3	13.9820	2895.2480	0	0°	R	0	
4	17.3818	2895.1200	0	0°	R	0	
5	83.4133	2870.3000	0	0°	Qbda	0	
6	109.2645	2870.2200	0	0°	Qbda	0	
7	174.9723	2915.0010	0	0°	R	0	
8	185.2754	2916.5680	0	0°	R	0	
9	206.8990	2918.5170	0	0°	R	0	
10	221.2260	2918.8520	0	0°	R	0	
11	236.8191	2918.7120	Asequia	0°	R	0	
12	246.5029	2918.8000	Asequia	0°	R	0	
13	283.1605	2916.8280	0	0°	R	0	

DATA BASE EDITION.

DLTCAD 14 has a comprehensive data base of transmission line elements such as: structures, supports, conductors, insulators, from which a user can develop a particular data base as well as tables and drawings for a project.

All data base incorporated in the software are editable and expandable, and this allows users to introduce their own data tables in the software.



STATE HYPOTHESIS.

DLTCAD 14 can handle up to 10 hypothesis scenarios per Project. A user defines for each project, the number of hypothesis which he/she will consider to work with. Additionally, the software allows users to select from three types of conductors per span.

Main overhead conductors can be designed up to three triples plus a guard cable if it's required. Other additions are neutral conductor, or another conductor that shares the same support. Each state hypothesis' name or data can be edited.

*****8